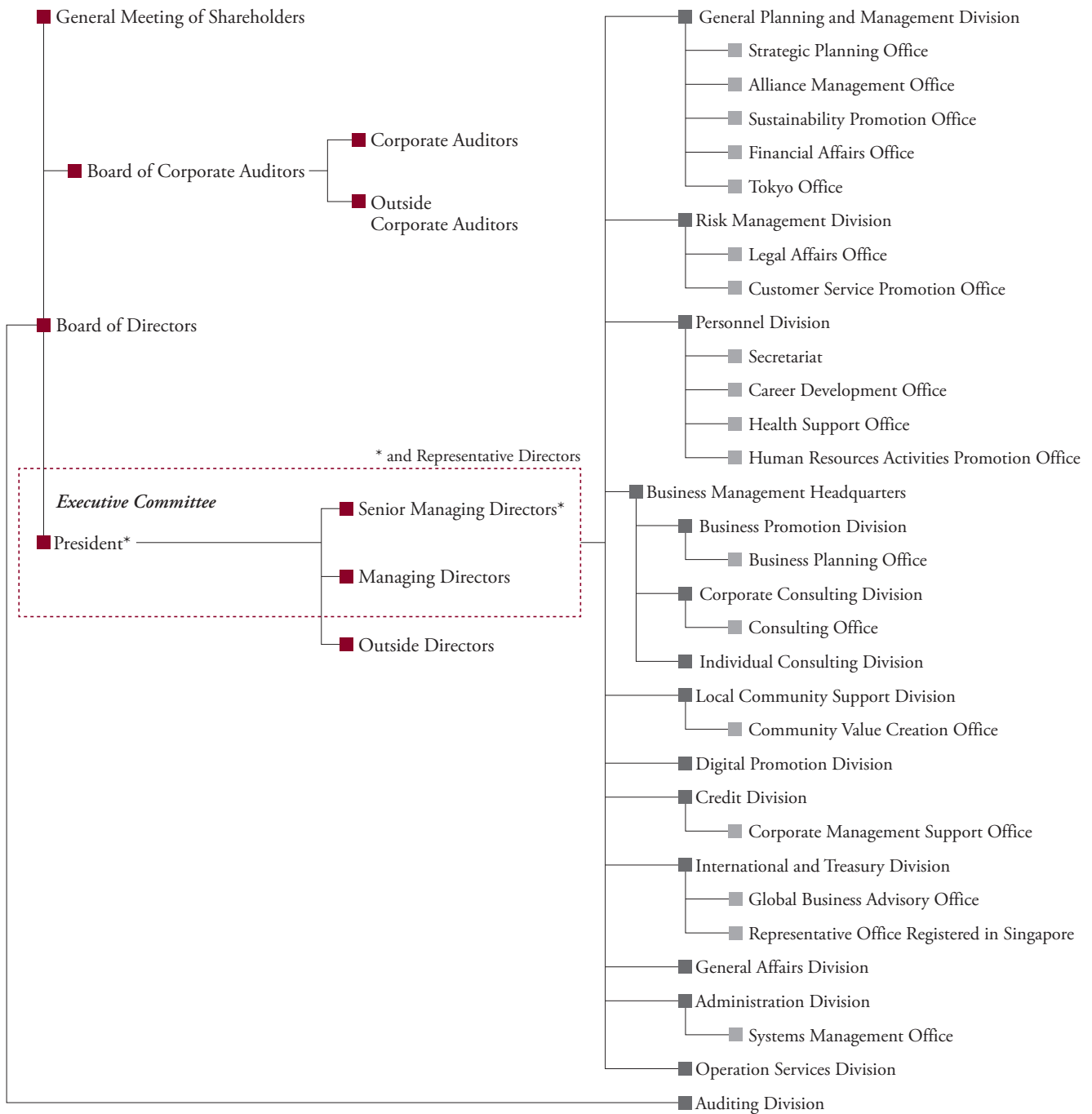


Organization Chart (as of July 1, 2024)



Board of Directors, Corporate Auditors and Executive Officers (as of July 1, 2024)

President

Kazumasa Nagahori

Senior Managing Director

Toshiyuki Shirai

Managing Directors

Ken Otomo

Takao Miyazaki

Kiyoshi Takizawa

Directors

Ryuichi Mitsuoka (outside)

Yukimitsu Sanada (outside)

Ayako Kobayashi (outside)

Corporate Auditors

Susumu Kurosawa (standing)

Kazuhiro Wakabayashi (standing)

Tomio Kezuka (outside)

Hayato Yoshida (outside)

Akira Nakano (outside)

Managing Executive Officers

Manabu Okabe

Toshitaka Matsuura

Executive Officers

Noboru Iijima

Kenichi Komoriya

Yukinori Watanabe

Hiroshi Takeuchi

Kazuhide Kusao

Masahiro Koyama

Masayuki Kaneko

Taiei Morita

Katsuya Isonaka

Investor Information (as of March 31, 2024)

Common Stock

Authorized: 80,000 thousand shares

Issued: 33,405 thousand shares

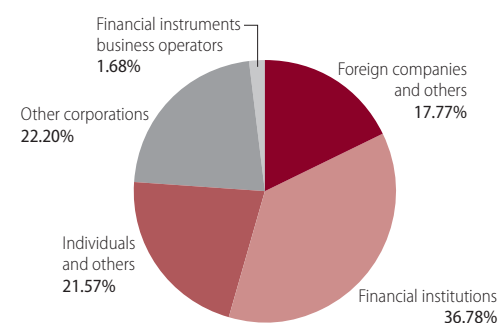
Number of Shareholders 13,178

Major Shareholders

Name	Number of shares (Thousands of shares)	Shares held as a percentage of total outstanding shares (%)
The Master Trust Bank of Japan, Ltd. (trust account)	3,681	11.10
Custody Bank of Japan, Ltd. (trust account)	2,469	7.45
The Chiba Bank, Ltd.	925	2.79
QR Fund Investment Limited Partnership, General Partner: QR Investment Co., Ltd.	914	2.75
Custody Bank of Japan, Ltd. (trust account 4)	810	2.44
Meiji Yasuda Life Insurance Company	735	2.22
Musashino Bank Industries Employees' Stockholding Association	710	2.14
SUMITOMO LIFE INSURANCE COMPANY	702	2.12
STATE STREET BANK AND TRUST COMPANY 505223 (Standing proxy: Mizuho Bank, Ltd., Settlement & Clearing Services Department)	625	1.88
Maeda Glass Co., Ltd.	604	1.82

* Shareholding percentages are rounded down to two decimal places.

Number of Shares Held by Type of Shareholders



Notes: 1. Some treasury stock is contained in "Individuals and others."
2. "Other corporations" includes shares under the name of Japan Securities Depository Center, Inc.