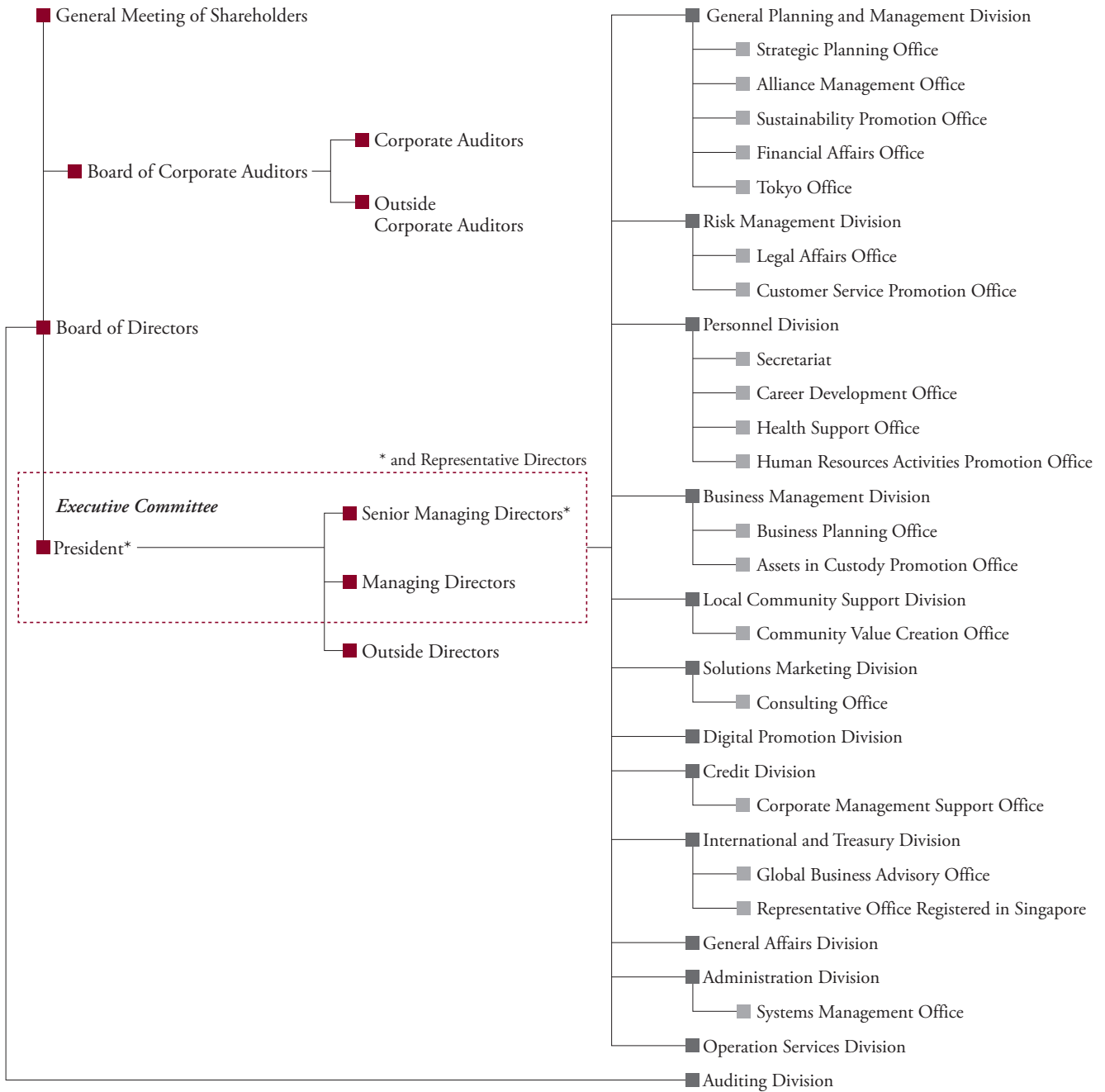


## Organization Chart (as of July 1, 2023)



## Board of Directors, Corporate Auditors and Executive Officers (as of July 1, 2023)

<b>President</b>	<b>Managing Directors</b>	<b>Corporate Auditors</b>	<b>Managing Executive Officers</b>	<b>Executive Officers</b>
Kazumasa Nagahori	Ken Otomo	Susumu Kurosawa (standing)	Manabu Okabe	Masahiro Asano
<b>Senior Managing Director</b>	Tsutomu Kainuma	Kazuhiro Wakabayashi (standing)	Yutaka Amada	Yukio Kurosu
Toshiyuki Shirai	Takao Miyazaki	Tomio Kezuka (outside)		Toshitaka Matsuura
	<b>Directors</b>	Hayato Yoshida (outside)		Noboru Iijima
	Ryuichi Mitsuoka (outside)	Akira Nakano (outside)		Kiyoshi Takizawa
	Yukimitsu Sanada (outside)			Kenichi Komoriya
	Ayako Kobayashi (outside)			Yukinori Watanabe
				Hiroshi Takeuchi
				Kazuhide Kusao
				Masahiro Koyama

## Investor Information (as of March 31, 2023)

**Common Stock** Authorized: 80,000 thousand shares  
Issued: 33,805 thousand shares

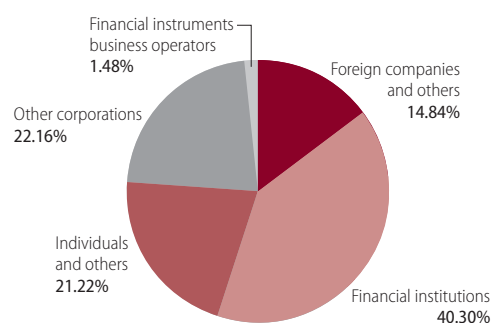
**Number of Shareholders** 13,040

### Major Shareholders

Name	Number of shares (Thousands of shares)	Shares held as a percentage of total outstanding shares (%)
The Master Trust Bank of Japan, Ltd. (trust account)	3,572	10.65
Custody Bank of Japan, Ltd. (trust account)	2,415	7.20
Custody Bank of Japan, Ltd. (trust account 4)	1,209	3.60
The Chiba Bank, Ltd.	925	2.75
QR Fund Investment Limited Partnership, General Partner: QR Investment Co., Ltd.	914	2.72
Meiji Yasuda Life Insurance Company	735	2.19
Musashino Bank Industries Employees' Stockholding Association	716	2.13
SUMITOMO LIFE INSURANCE COMPANY	702	2.09
Maeda Glass Co., Ltd.	602	1.79
Nippon Life Insurance Company	507	1.51

\* Shareholding percentages are rounded down to two decimal places.

### Number of Shares Held by Type of Shareholders



Notes: 1. Some treasury stock is contained in "Individuals and others."  
2. "Other corporations" includes shares under the name of Japan Securities Depository Center, Inc.